



www.eurofinsUS.com/food

info@eurofinsUS.com

North America Food & Feed

SCOPE OF SERVICES

Your Partner in Food Safety & Quality

Eurofins is the leader in food, feed, and supplement testing, support, and development services.

With a keen focus on analytical methods, our staff collaborates with your team to develop scientific testing solutions for your products that exceed quality standards. We offer integrated solutions that span your products' entire life cycle.

TESTING SERVICES

Allergens Testing

- Allergen monitoring programs
- Qualitative and quantitative analysis
- EU-regulated allergens and more
- FDA-regulated "Big 9"
- Full tree nut panel
- Gluten-free testing

Chemical and Ingredient Verification

- Compendial testing (including USP/NF, FCC, EP, and more)
- Non-compendial testing, according to a client, industry, or developed method
- Identification, purity, and strength
- Analysis of raw material components

- Authenticity testing
- Identity and purity of raw materials
- Method development and validation
- Vendor qualification

Contaminants Investigation

- Antibiotic residues
- Filth and extraneous material
- Heavy metals
- Mycotoxins
- Pesticide residue screens

Dairy Producer and Dairy Product Testing

- A1/A2 analysis
- Calibration standard results
- Chemistry and microbiology analyses
- Dairy protein characterization

- Instrument calibration standards
- Mastitis DNA/PCR
- Milk pregnancy testing (bovine/caprine)

Food Authenticity and Forensics

- Adulteration
- Authenticity of honey, olive oil, juices, syrups, and more
- Botanical identification and verification
- Fish DNA barcoding
- Meat speciation identification

GLP and GMP Study Capabilities

- Testing conducted in compliance with US EPA CFR 40 Part 160
- GMP compliance
- ISO 17025 GMP part 210/211 accredited
- DEA license

GMO Testing

- Crops, ingredients, and finished products
- Non-GMO verification program
- Export to EU, Japan, and, other markets
- Other GMO-related programs and label claims

Microbiology, Pathogens, and Probiotics

- Bacterial strain subtyping
- Challenge studies
- Courier and rapid logistic capabilities
- Environmental monitoring programs (EMP)
- Microbial identification
- Microbiome profiling
- Metagenomic shotgun and whole bacteria genome sequencing
- On-site and modular services
- Probiotic enumeration and live/dead cell count by flow cytometry
- Rapid pathogen detection technologies
- Sanitation verification and process validation studies
- Spoilage testing

Nutrition Analysis

- AAFCO nutrient profile for dogs and cats
- Amino acids
- Enzymes
- Fatty acids
- Guaranteed analysis
- Medicated feed
- Method development and validation
- Minerals
- NOPA referee analysis for soybean meals
- Preservatives/antioxidants
- Proximates
- FDA, USDA regulatory-compliant nutrition labeling services
- Vitamins

continued on next column >>

continued on next page >>

Stability and Shelf Life

- Custom chamber conditions
- ICH guidelines
- Monitor changes in microbiological activity, rancidity, ingredient activity, and sensory attributes
- Photostability chamber
- Real-time and accelerated conditions
- Specialized project trend reporting
- Temperature and humidity controlled chambers
- Verify expiration dates and 'best if used by' claims

FOOD SAFETY SERVICES

Auditing and Certification

- Amazon Approved CB for Amazon Dietary Supplements Seller Requirements – 21 CFR 117 – GMP for Food Manufacturing
- Amazon Approved CB for Amazon Dietary Supplements Seller Requirements – 21 CFR 111 – GMP for Dietary Supplements
- Costco Supplier Audits
- FAMI-QS, ISF/SF
- GFSI-benchmarked schemes: SQF, BRC, and FSSC 22000
- Global Retailer and Manufacturer Alliance (GRMA)
- Gluten-Free Certification
- GMP, GDP, GLP, and HACCP
- Identity preservation (GMO and label claims)

- International Bottled Water Association (IBWA)
- ISO 22000
- National Animal Supplement Council (NASC)
- Retailer and association audits
- Safe Feed/Safe Food (SF/SF)
- SSCI Audits
- Supplements audit
- Supplier verification programs

Food Safety Training and Consulting

- Certification gap analysis (SQF, BRC, and FSSC 22000)
- Customized training solutions
- Environmental monitoring program (EMP) training and development
- FAMI-QS: Awareness in Feed Safety
- Food microbiology and GMP training
- Foreign Supplier Verification Program (FSVP)
- FSMA compliance and FSPCA preventive controls training
- FSMA Produce
- FSPCA Preventive Controls for Animal Food and Human Food
- GLP within Food Plant Laboratories
- GFSI scheme (SQF, BRC, FSSC 22000) training and consulting
- HACCP and food safety program development and training

- Internal Food Safety Auditor
- Nutrition Labeling
- Online training
- On-site training
- Public food safety training
- SOP templates

ON-SITE TESTING SERVICES

Rapid Quality Trait Analysis

- 24/7 technical support
- Customizable to nearly any food matrix
- Quantitative and qualitative measurements

Test Kits

Our PCR-based, fully-automated ELISA-based, and Lateral Flow assays are made for the food and feed industries.

- Allergens
- Animal species
- Culture media
- Environmental and water testing
- Food pathogens
- GMOs
- Mycotoxins
- Sample collection tools
- Veterinary drug residues

RESEARCH AND DEVELOPMENT

Bioavailability Assessment

Capability to analyze blood, serum, tissue, and urine in humans and animals, as well as pet food and feed.

FDA Detention

Foreign Material Identification

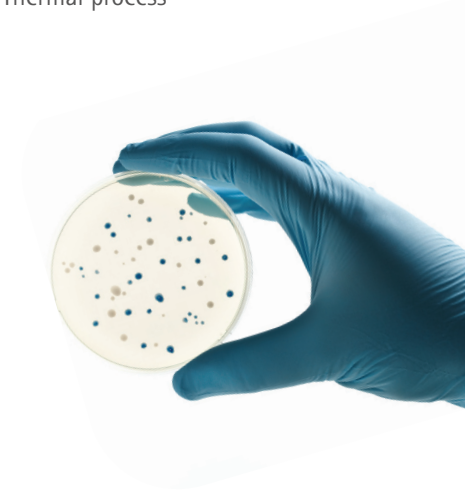
Legal and Insurance

Method Development

Specialty and Investigative Studies

PROCESS AND AUTHORITY VALIDATION

- Aseptic system validation and FDA filing
- Extrusion processes
- High pressure process (HPP)
- Thermal process



continued on next column >>

continued on next page >>

Eurofins ExpressMicro™

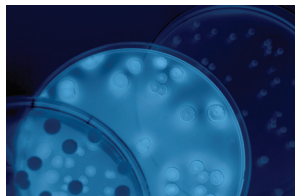
Moving at the Speed of Your Business



What is ExpressMicro?

When your product release time is critical, ExpressMicro™ provides ISO 17025-quality results at unparalleled speed. We deploy advanced technologies and superior logistics to rapidly quantify, detect, and identify pathogenic and spoilage microbes with expedited turnaround times both locally and nationally.

With our dedicated UPS hub, ExpressMicro™ samples arrive at the lab in the early morning hours—and we deliver results up to eight hours faster than standard next-day air shipping.



Whether you are a supplier, processor, manufacturer, packer, distributor, or retailer, your bottom line depends on top-of-the-line service from your industry partners. Our laboratories have the technical expertise, state-of-the-art instrumentation, and resources to provide you reliable results in which you can have confidence.

